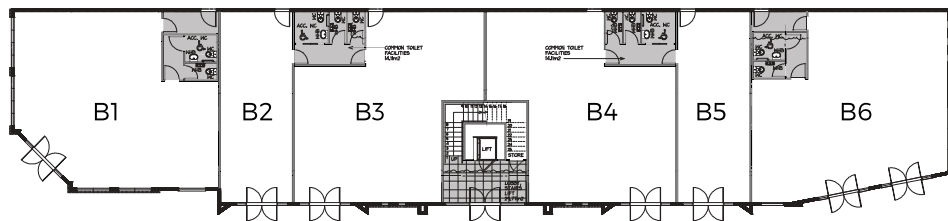


# BLOCK B

---

## GROUND FLOOR



### UNIT B1:

Retail / Hospitality  
122.98m<sup>2</sup>

### UNIT B2:

Retail / Hospitality  
49.16m<sup>2</sup>

### UNIT B3:

Retail / Hospitality  
100.41m<sup>2</sup>

### UNIT B4:

Retail / Hospitality  
100.41m<sup>2</sup>

### UNIT B5:

Retail / Hospitality  
49.16m<sup>2</sup>

### UNIT B6:

Retail / Hospitality  
126.28m<sup>2</sup>

NOTE: Individual tenancies shown are indicative only. Actual tenancies may vary.